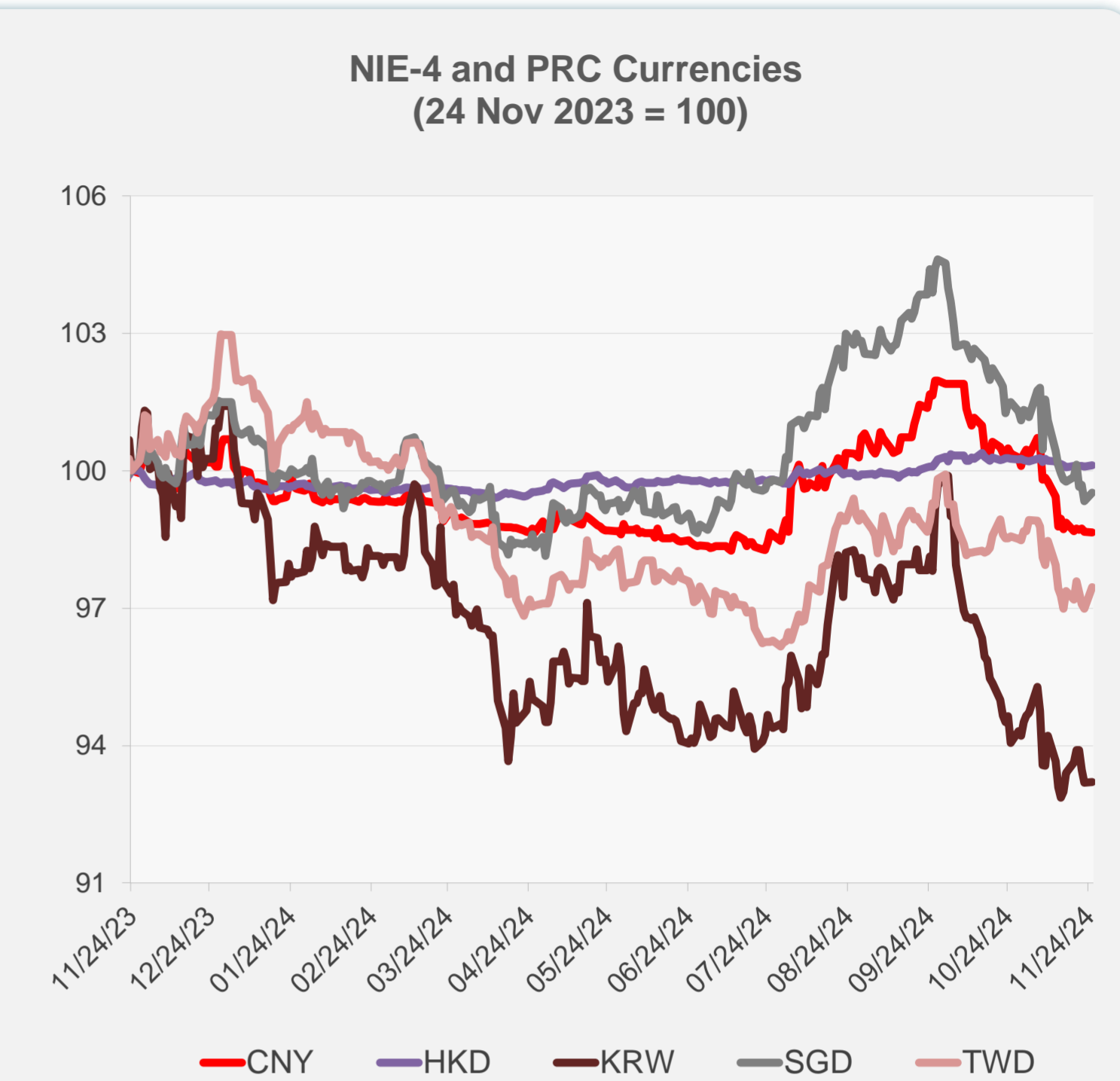
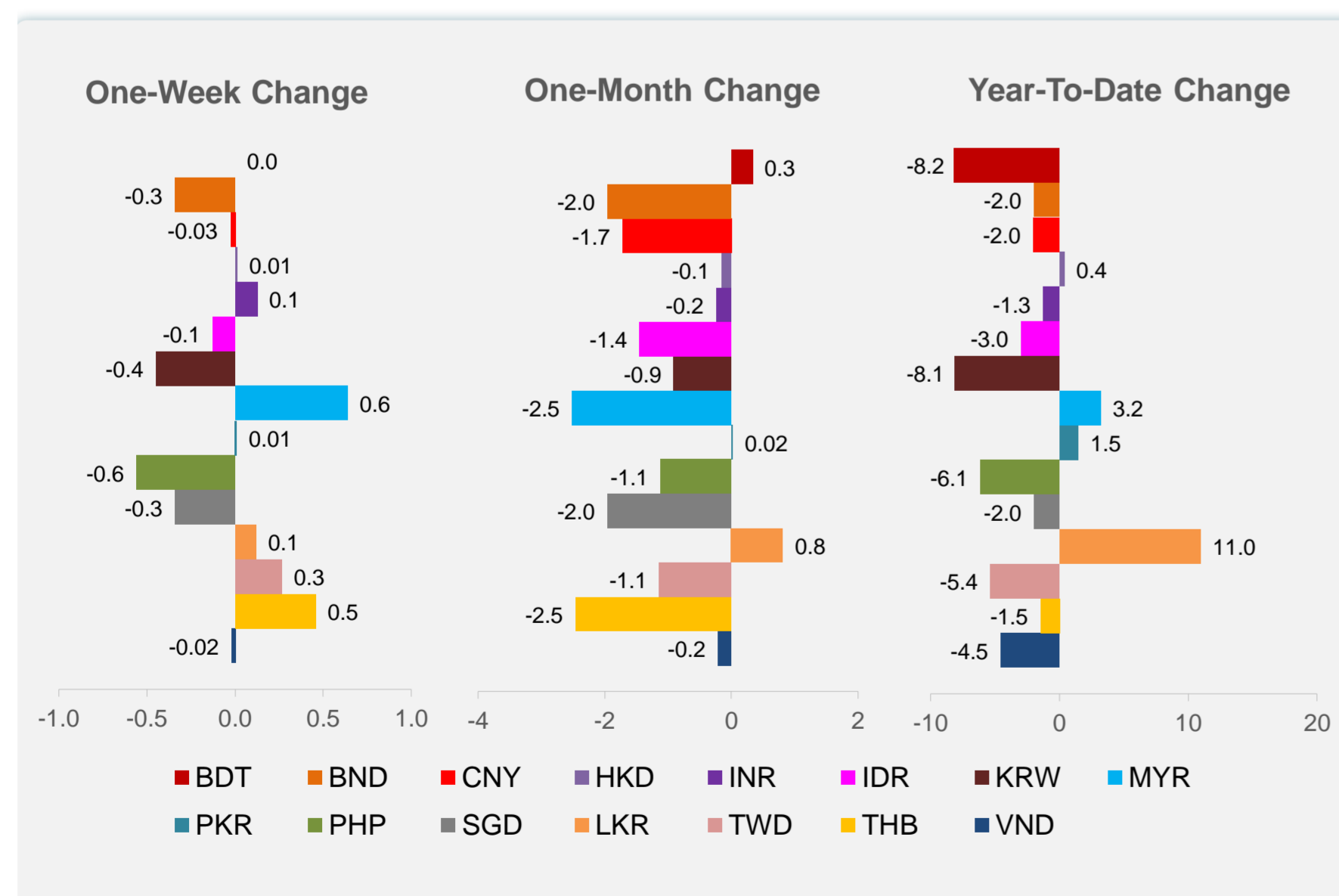
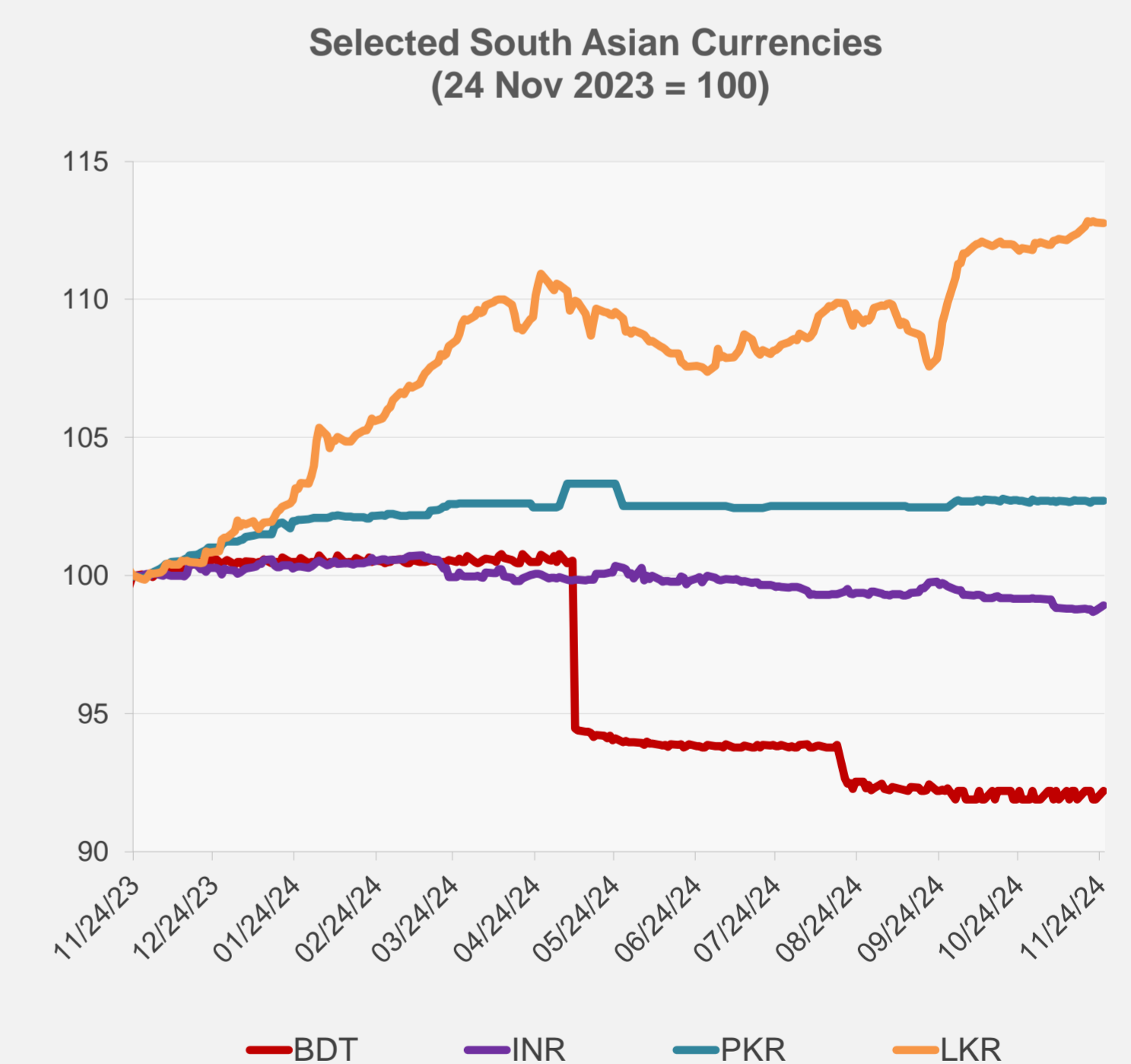
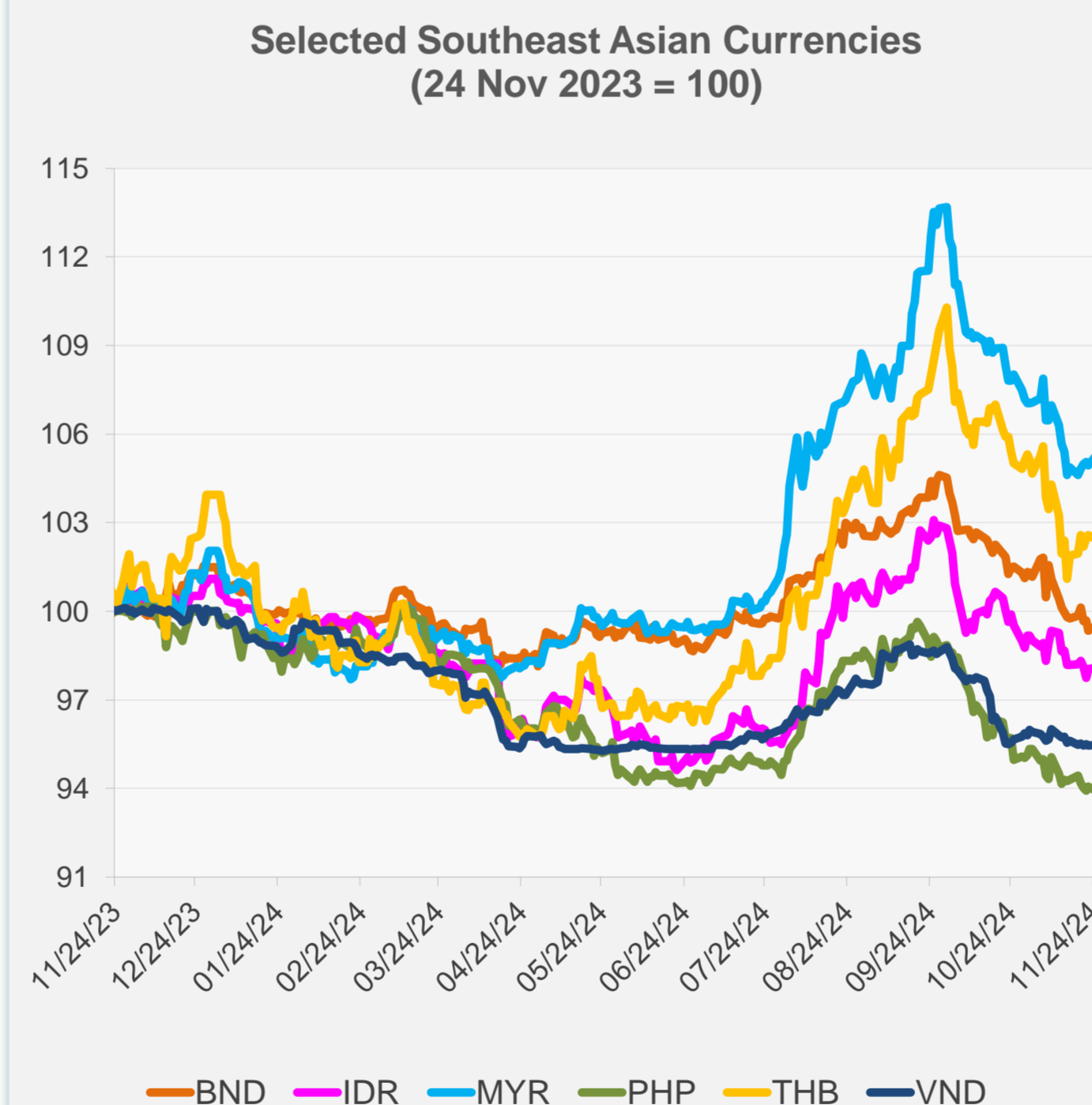


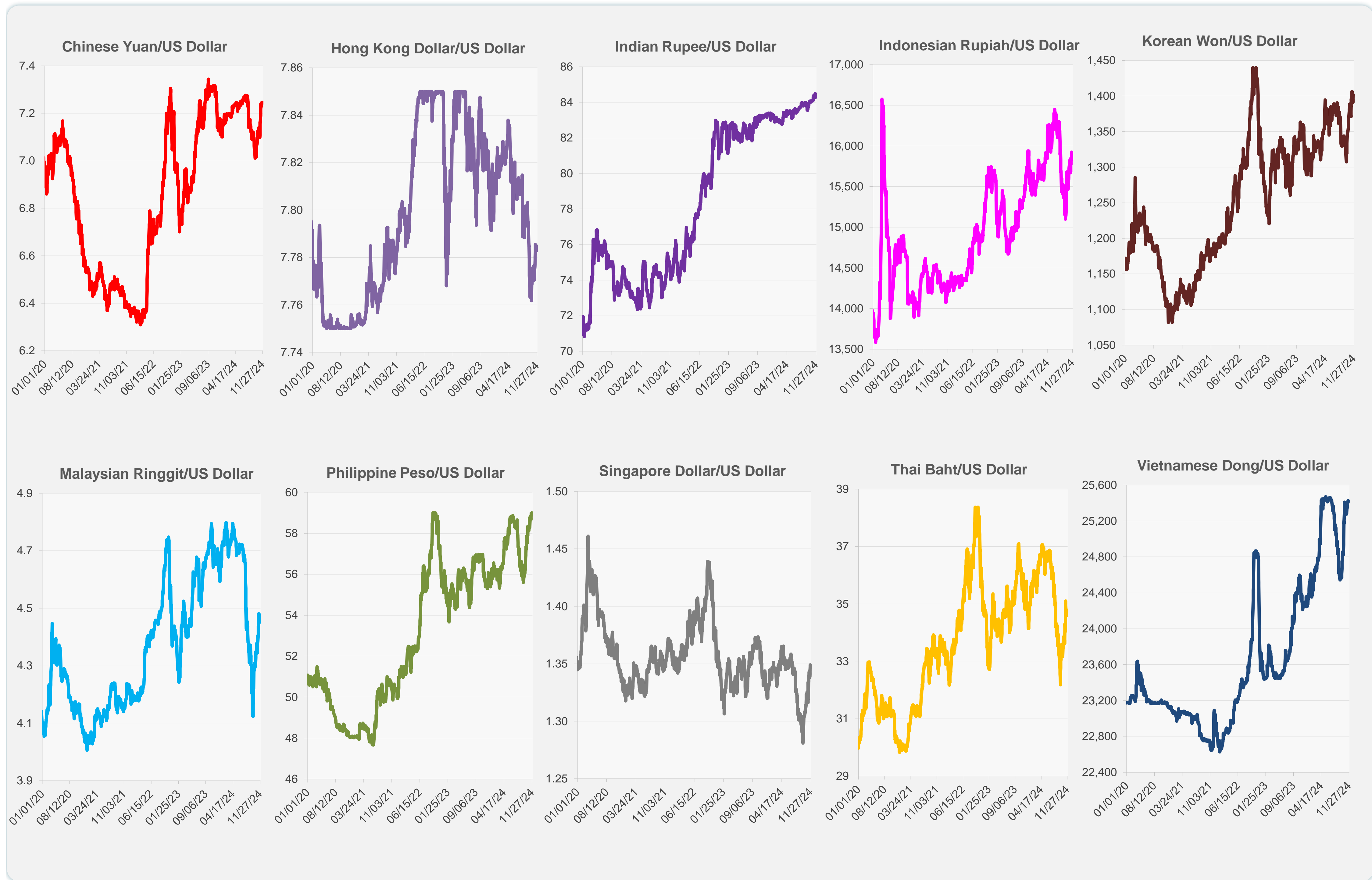
	Latest Closing	% change from Previous Day	% change from 01-Jan-24
Euro	0.95	0.76	-5.04
Japanese yen (JPY)	154.37	0.35	-8.73
Bangladeshi taka (BDT)	119.50	0.33	-8.16
Brunei dollar (BND)	1.35	0.18	-1.95
Chinese yuan (CNY)	7.25	-0.01	-2.02
Hong Kong dollar (HKD)	7.78	0.03	0.37
Indian rupee (INR)	84.29	0.20	-1.25
Indonesian rupiah (IDR)	15,870.00	0.03	-2.98
Korean won (KRW)	1,401.50	0.02	-8.09
Malaysian ringgit (MYR)	4.45	0.35	3.19
Pakistan rupee (PKR)	277.78	0.02	1.46
Philippine peso (PHP)	59.00	-0.18	-6.12
Singapore dollar (SGD)	1.35	0.18	-1.95
Sri Lanka rupee (LKR)	291.00	-0.01	10.98
Taipei,China NT dollar (TWD)	32.45	0.47	-5.35
Thai baht (THB)	34.64	-0.16	-1.45
Vietnamese dong (VND)	25,420.00	0.01	-4.54



NIE = Newly Industrialized Economies



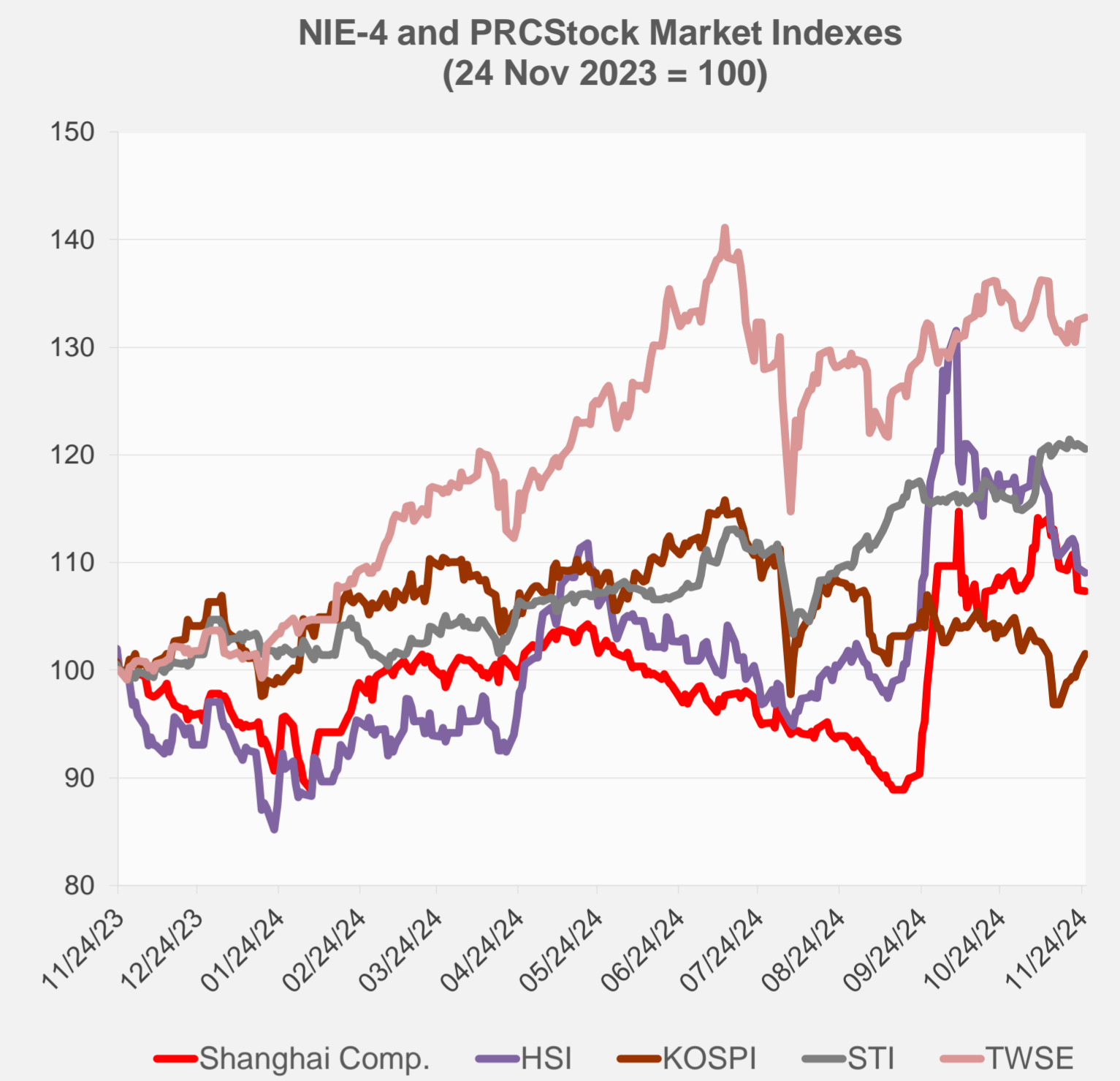
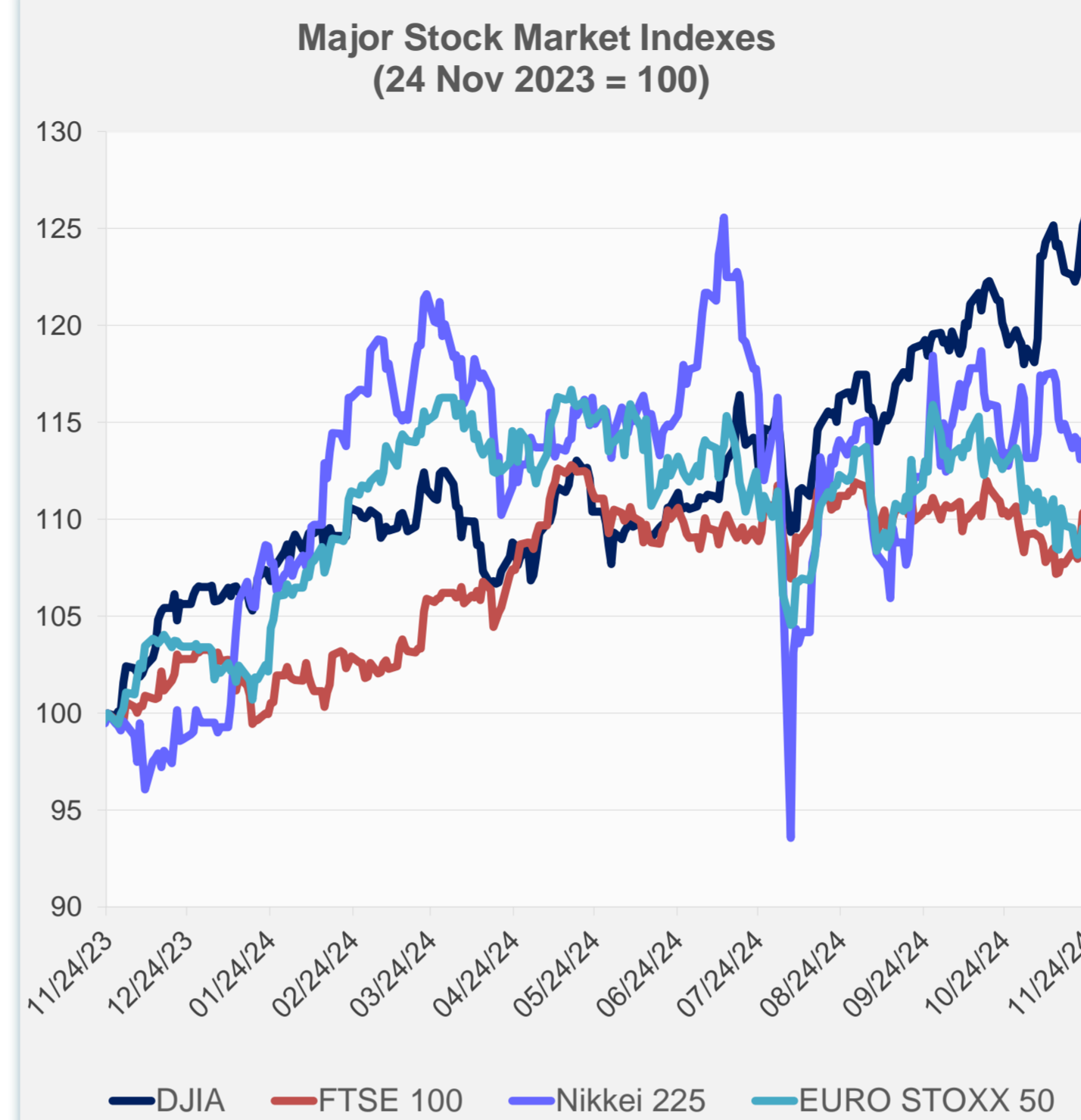
Note: Negative/Decreasing values indicate depreciation of local currency, and positive/increasing values indicate appreciation.  
Source: ADB calculations using data from Haver Analytics.



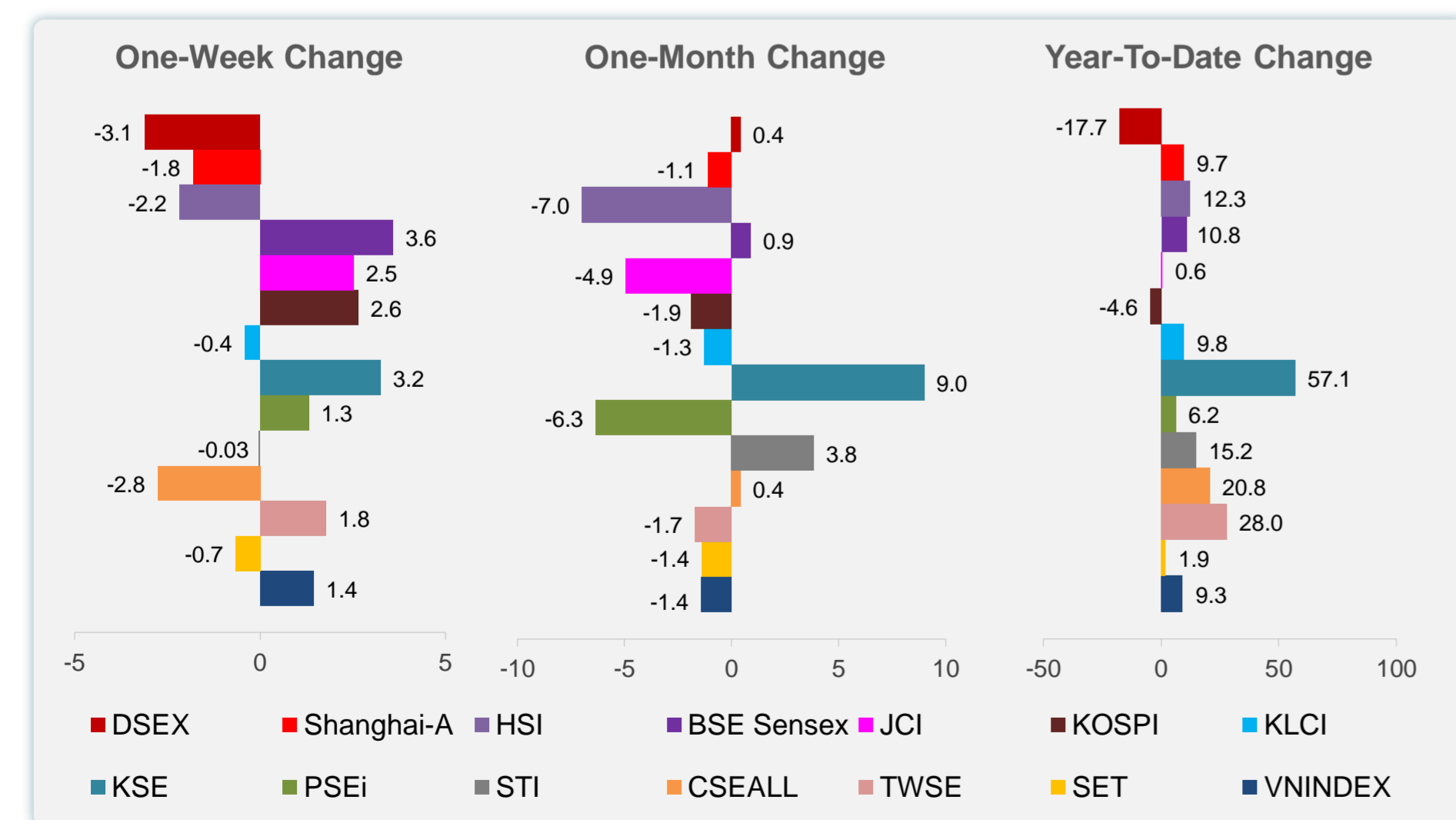
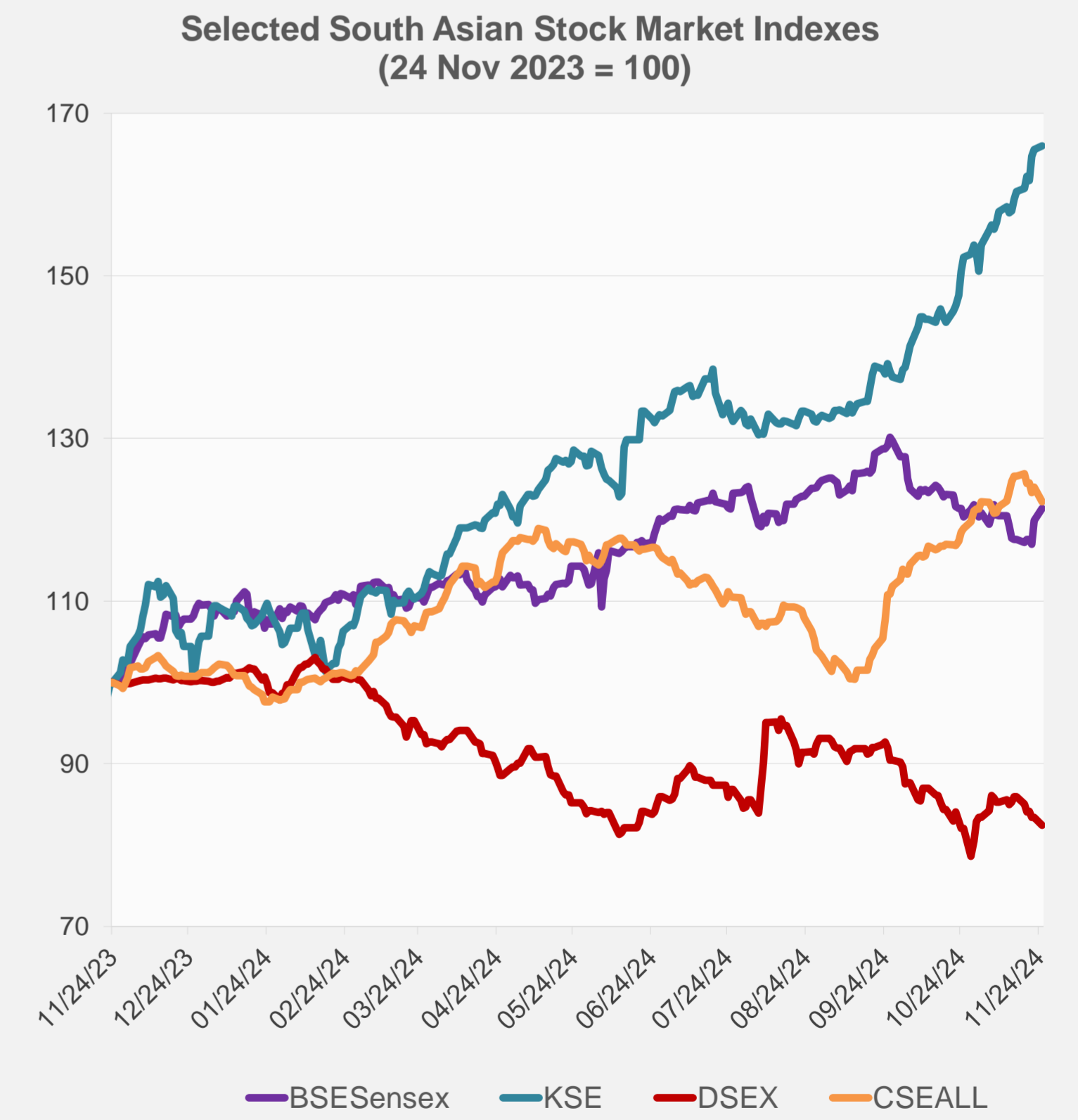
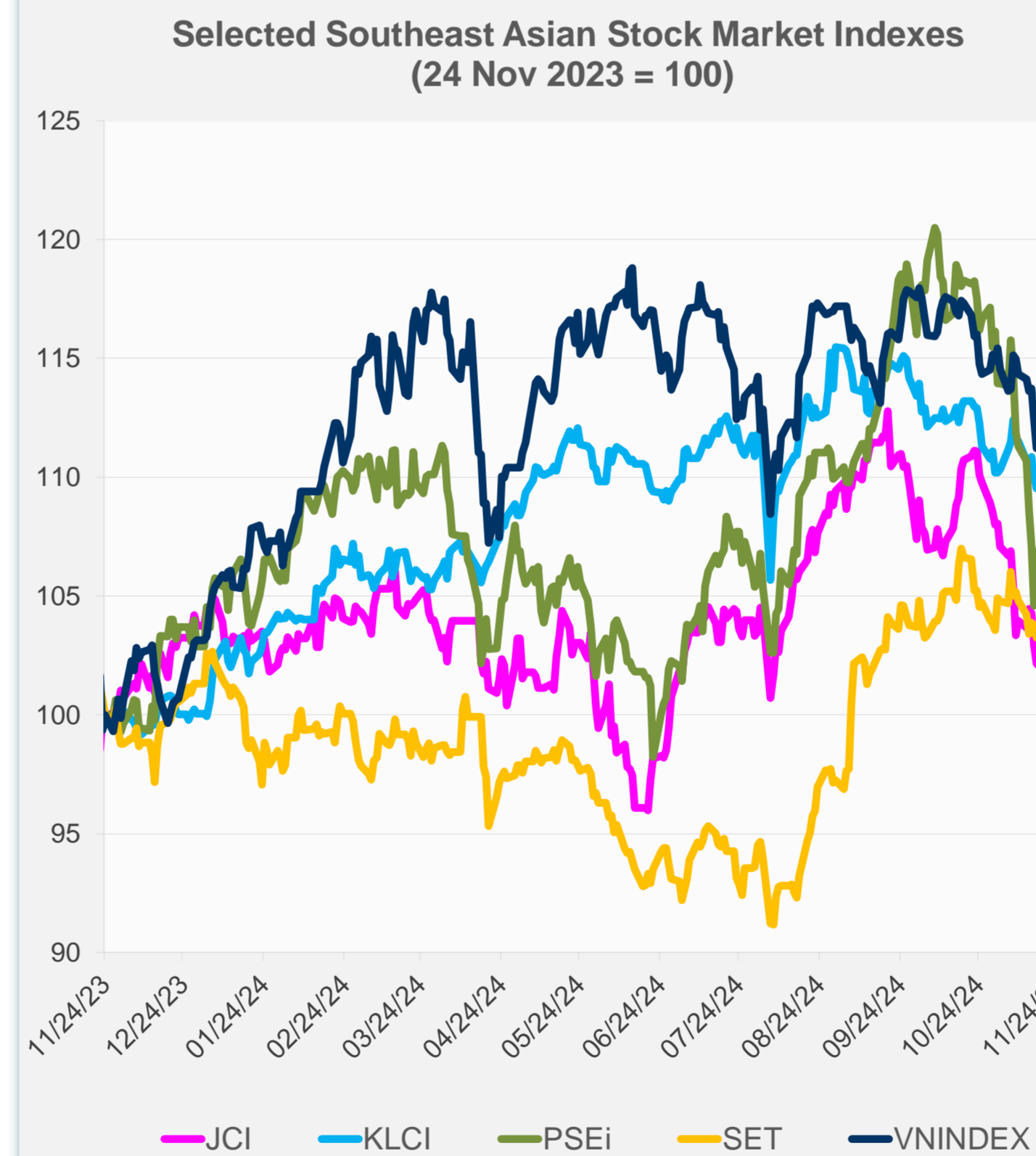
Source: Haver Analytics.

Daily Market Watch  
**STOCK INDEXES**

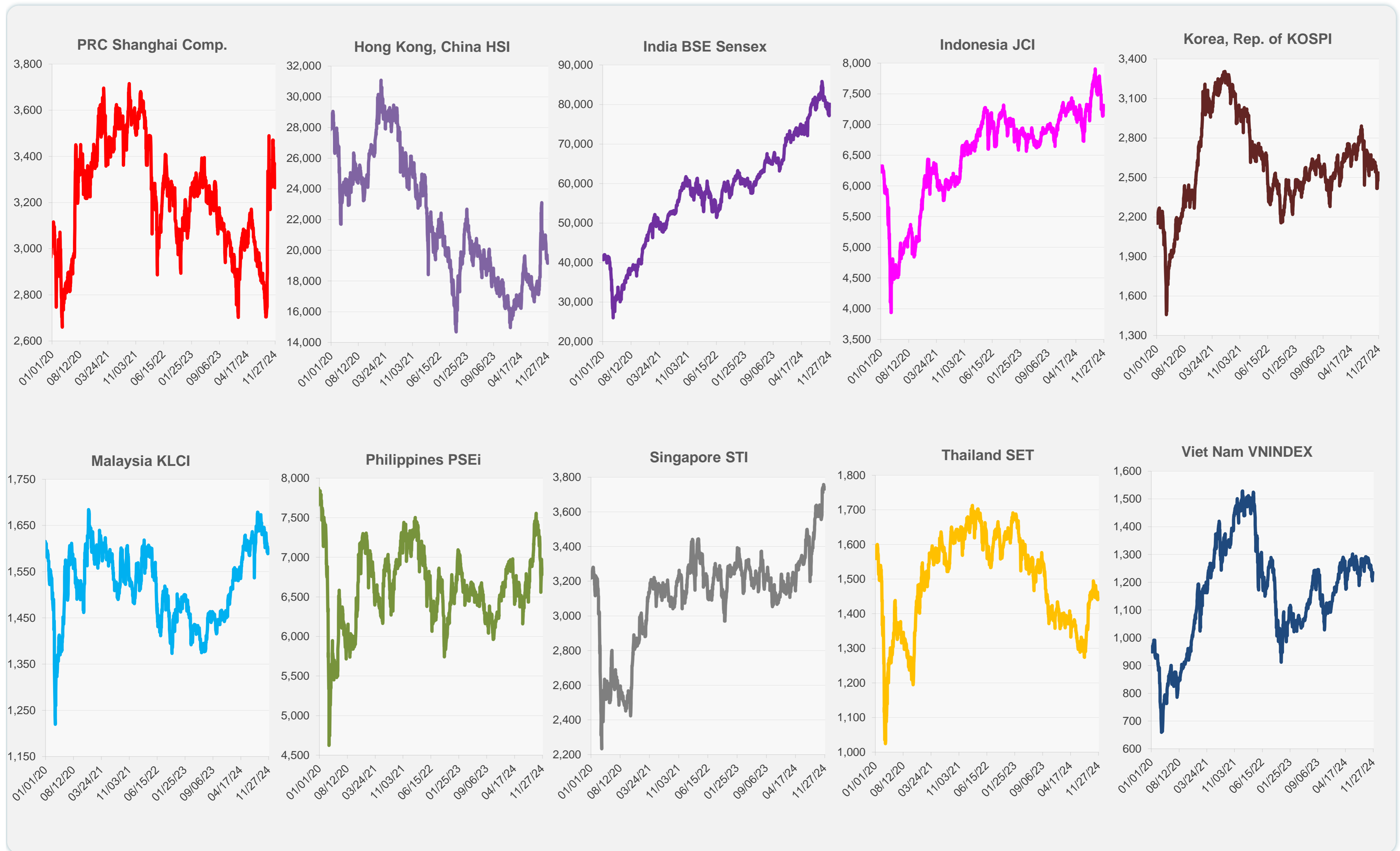
	Latest Closing	% change from Previous Day	% change from 01-Jan-24
US Dow Jones Ind Avg	44,736.57	0.99	18.70
US NASDAQ	19,054.84	0.27	26.94
US S&P 500	5,987.37	0.30	25.53
UK FTSE 100	8,291.68	0.36	7.22
EURO STOXX 50	4,799.87	0.23	6.16
Japan NIKKEI 225	38,780.14	1.30	15.89
Bangladesh DSEX	5,136.13	-1.18	-17.73
PRC Shanghai Comp.	3,263.76	-0.10	9.71
Hong Kong, China HSI	19,150.99	-0.41	12.34
India BSE Sensex	80,109.85	1.25	10.85
Indonesia JCI	7,314.11	1.65	0.57
Korea, Rep. of KOSPI	2,534.34	1.32	-4.55
Malaysia KLCI	1,597.45	0.48	9.82
Pakistan KSE 100	98,079.78	0.29	57.05
Philippines PSEi	6,850.00	1.03	6.20
Singapore STI	3,731.39	-0.39	15.16
Sri Lanka CSEALL	12,866.65	-1.44	20.77
Taipei, China TWSE	22,948.37	0.19	27.98
Thailand SET	1,443.31	-0.21	1.94
Viet Nam VNINDEX	1,234.70	0.54	9.27



NIE = Newly Industrialized Economies



Sources: ADB calculations using data from CEIC Data Company and Haver Analytics.



Sources: CEIC Data Company and Haver Analytics.

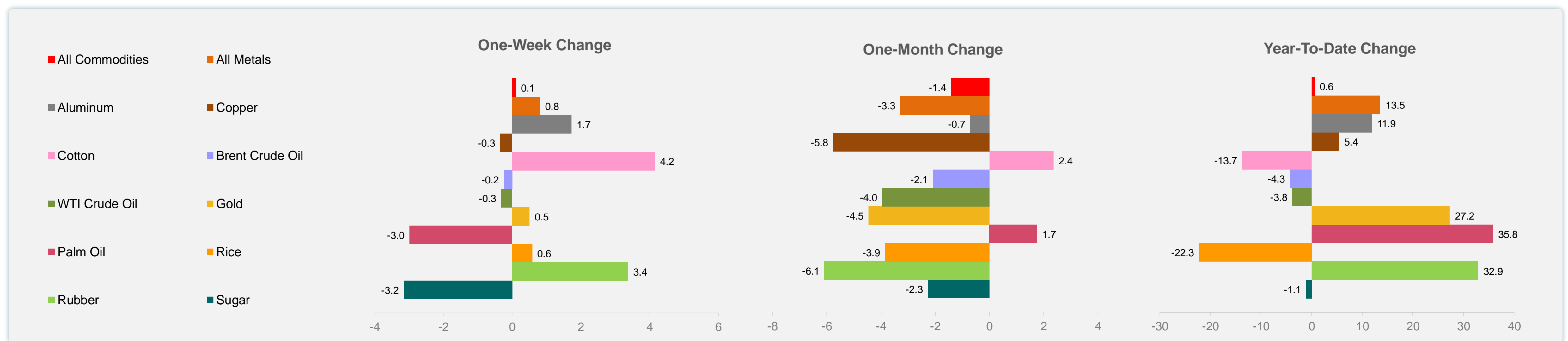
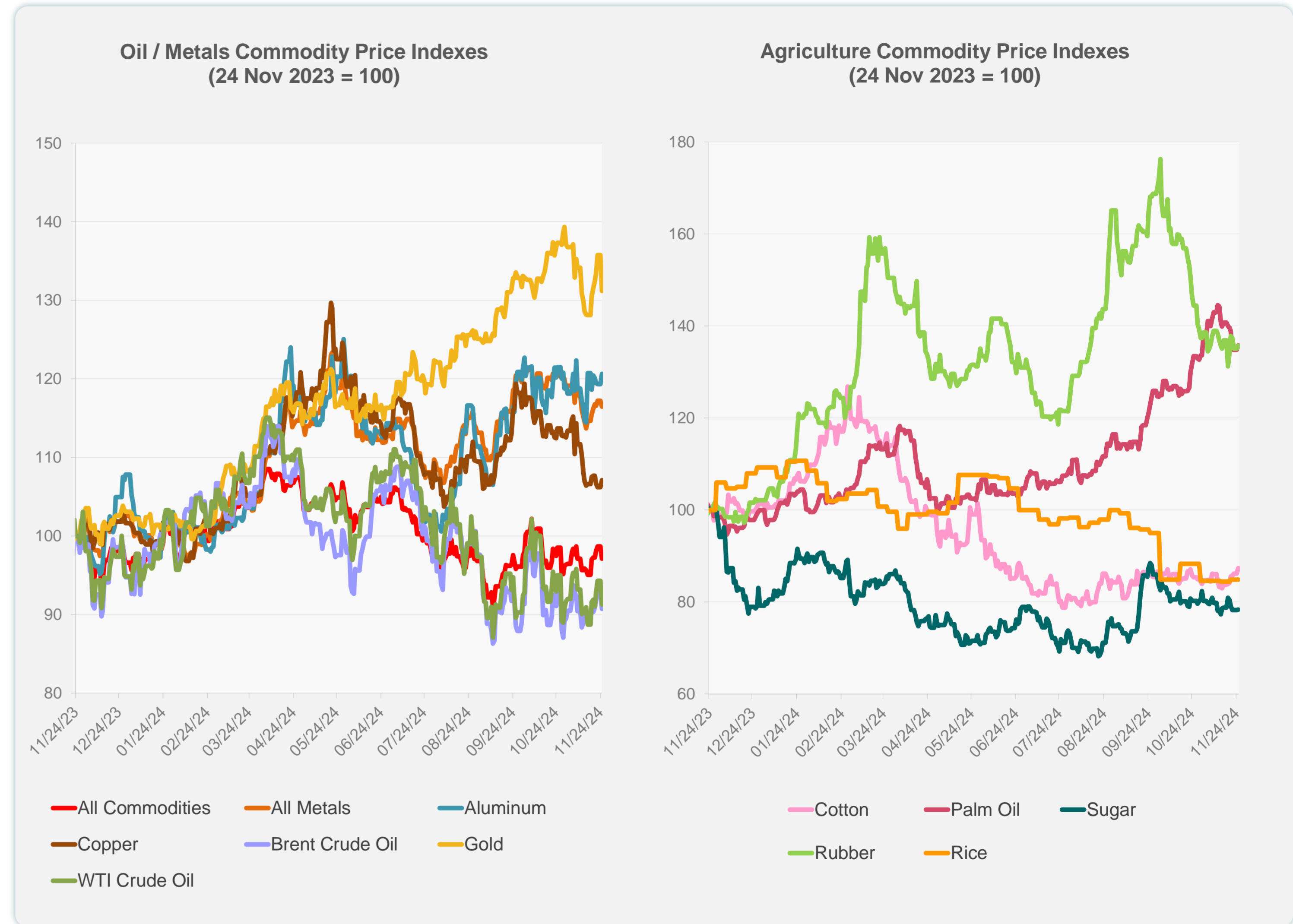
Daily Market Watch  
**COMMODITY PRICES**

26 November 2024, 9:00 AM Manila

	Unit	Latest Closing	% change from Previous Day	% change from 01-Jan-24
S&P All Commodities	US\$	538.59	-1.57	0.55
S&P All Metals	US\$	314.96	-0.65	13.53
Aluminum	US\$/metric ton	2,624.90	1.09	11.91
Copper	US\$/metric ton	8,923.43	0.85	5.43
Cotton	US cents/lb	67.72	1.42	-13.73
Brent Crude Oil	US\$/barrel	74.28	-2.37	-4.28
WTI Crude Oil	US\$/barrel	68.94	-3.23	-3.78
Gold	US\$/troy oz	2,625.01	-3.36	27.24
Palm Oil	US\$/metric tonne	1,098.51	0.68	35.79
Rice <sup>1</sup>	US\$/metric ton	524.00	0.00	-22.26
Rubber <sup>2</sup>	US\$/kg	230.00	0.44	32.87
Sugar	US cents/lb	20.25	0.15	-1.07

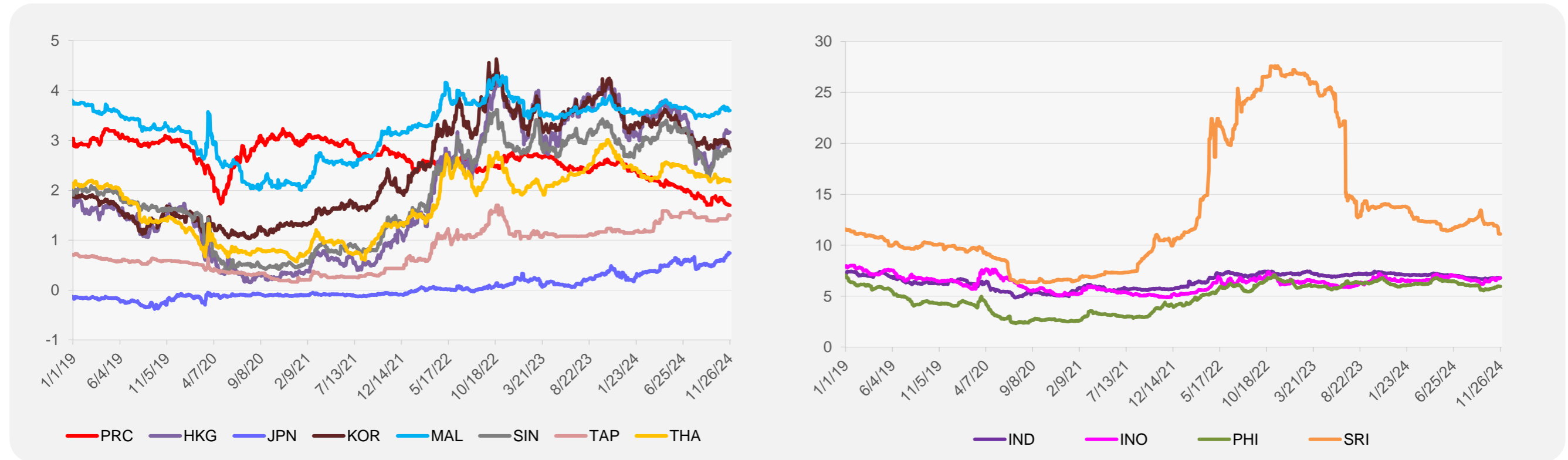
<sup>1</sup> Latest closing price from 20 November 2024.

<sup>2</sup> Singapore Exchange, Ribbed Smoked Sheet Rubber.

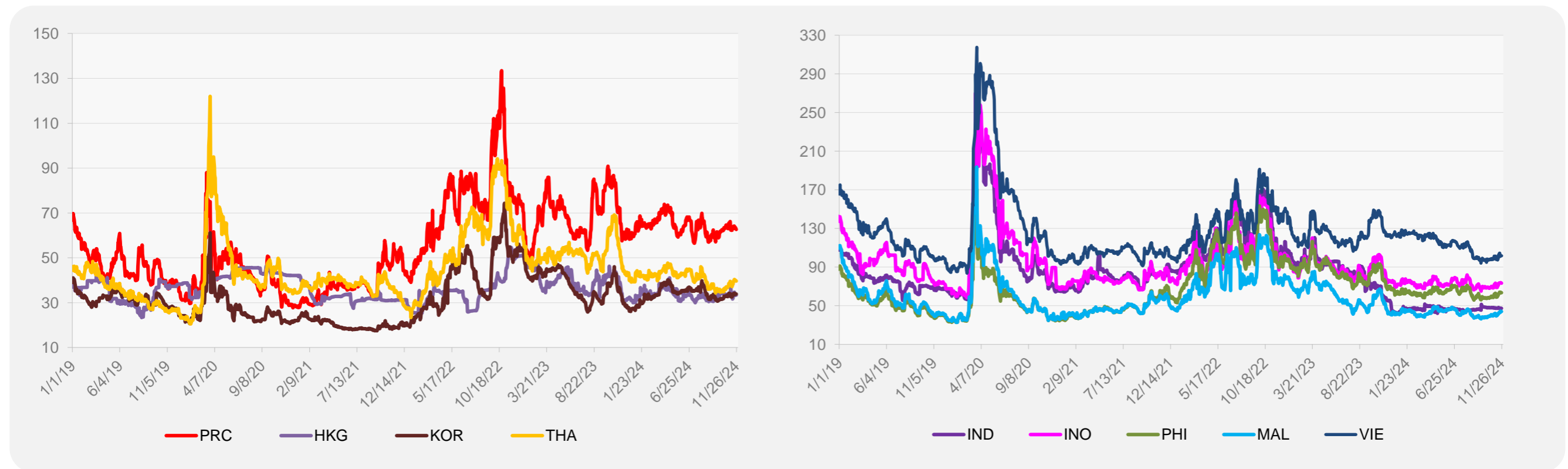


Source: ADB calculations using data from Bloomberg.

### 5-YEAR LOCAL CURRENCY GOVERNMENT BOND YIELDS (%)



### 5-YEAR CREDIT DEFAULT SWAP<sup>1</sup>



<sup>1</sup> In USD and based on sovereign bonds.  
Source: ADB calculations using data from Bloomberg.